

IN THE DISTRICT COURT OF THE FIFTH JUDICIAL DISTRICT OF THE
STATE OF IDAHO, IN AND FOR THE COUNTY OF TWIN FALLS

In Re CSRBA) PARTIAL DECREE PURSUANT TO I.R.C.P. 54(b)
Case No. 49576) FOR FEDERAL RESERVED
)
) WATER RIGHT NO. 94-09517A

NAME AND ADDRESS: UNITED STATES OF AMERICA ACTING THROUGH
USDA FOREST SERVICE
550 W FORT ST MSC 033
BOISE ID 83724

SOURCE: See Attachment 1, Column A TRIBUTARY: See Attachment 1, Column B

Sources are located on National Forest System Land in the Independence Creek subwatershed (HUC12 170103010203).

QUANTITY: The amount of water necessary to control and suppress forest fires.

PRIORITY DATE: 11/06/1906

POINT OF DIVERSION: See Attachment 1, Columns C through G

PURPOSE AND PERIOD OF USE:

<u>PURPOSE OF USE</u>	<u>PERIOD OF USE</u>
Administrative-Fire Suppression	01/01 - 12/31

PLACE OF USE: National Forests in Idaho and the Kaniksu, Lolo and Kootenai National Forests in Montana.

See Attachment 2.

OTHER PROVISIONS NECESSARY FOR DEFINITION OR ADMINISTRATION OF THIS WATER RIGHT:

This right is limited to the intermittent diversion and use of water for the purpose of suppressing wildfires. This water right shall not be used as a basis to prevent the future appropriation of water.

This partial decree is subject to such general provisions necessary for the definition of the rights or for the efficient administration of the water rights as may be ultimately determined by the Court at a point in time no later than the entry of a final unified decree. Idaho Code § 42-1412(6).

RULE 54(b) CERTIFICATE

With respect to the issues determined by the above partial judgment it is hereby CERTIFIED, in accordance with Rule 54(b), I.R.C.P., that the court has determined that there is no just reason for delay of the entry of a final judgment and that the court has and does hereby direct that the above partial judgment is a final judgment upon which execution may issue and an appeal may be taken as provided by the Idaho Appellate Rules.

Eric J. Wildman
Presiding Judge of the
Coeur d'Alene-Spokane River Adjudication

Attachment 1

	A	B	C	D	E	F	G
1	SOURCE NAME	TO TRIBUTARY	TOWNSHIP	RANGE	SECTION	QQ	SURVEY CODE AND NUMBER
2	Owl Creek	Independence Creek	52N	01E	1		
3	Unnamed Stream	Owl Creek	52N	01E	1		
4	Unnamed Stream	Owl Creek	52N	01E	1		
5	Owl Creek	Independence Creek	52N	01E	2	NENE	L 1
6	Owl Creek	Independence Creek	52N	01E	2	NWNE	L 2
7	Owl Creek	Independence Creek	52N	01E	2	SENE	
8	Owl Creek	Independence Creek	52N	01E	2	SENW	
9	Owl Creek	Independence Creek	52N	01E	2	SWNE	
10	Snowbird Creek	Independence Creek	52N	01E	3	SENE	
11	Ellis Creek	Independence Creek	52N	01E	4		
12	Unnamed Stream	Ellis Creek	52N	01E	4		
13	Unnamed Stream	Ellis Creek	52N	01E	4		
14	Unnamed Stream	Ellis Creek	52N	01E	4		
15	Unnamed Stream	Ellis Creek	52N	01E	4		
16	Unnamed Stream	Independence Creek	52N	01E	4		
17	Unnamed Stream	Independence Creek	52N	01E	4		
18	Unnamed Stream	Independence Creek	52N	01E	4		
19	Unnamed Stream	Independence Creek	52N	01E	5	NWNE	L 2
20	Independence Creek	Tepee Creek	52N	01E	5	NWNW	L 4
21	Independence Creek	Tepee Creek	52N	01E	5	SWNW	
22	Snowshoe Creek	Independence Creek	52N	01E	5	SWSW	
23	Unnamed Stream	Independence Creek	52N	01E	6	NENW	L 3
24	Independence Creek	Tepee Creek	52N	01E	6	NESE	
25	Snowshoe Creek	Independence Creek	52N	01E	6	NESE	
26	Unnamed Stream	Independence Creek	52N	01E	6	NWNW	L 4
27	Independence Creek	Tepee Creek	52N	01E	6	NWSE	
28	Snowshoe Creek	Independence Creek	52N	01E	6	NWSE	
29	Unnamed Stream	Independence Creek	52N	01E	6	NWSE	
30	Independence Creek	Tepee Creek	52N	01E	6	SENE	
31	Unnamed Stream	Independence Creek	52N	01E	6	SENW	
32	Unnamed Stream	Independence Creek	52N	01E	6	SENW	
33	Unnamed Stream	Independence Creek	52N	01E	6	SENW	
34	Snowshoe Creek	Independence Creek	52N	01E	6	SESE	
35	Independence Creek	Tepee Creek	52N	01E	6	SESW	
36	Unnamed Stream	Independence Creek	52N	01E	6	SWNE	
37	Unnamed Stream	Independence Creek	52N	01E	6	SWNW	L 5
38	Independence Creek	Tepee Creek	52N	01E	7	NENW	
39	Unnamed Stream	Independence Creek	52N	01E	7	NENW	
40	Unnamed Stream	Independence Creek	52N	01E	7	NENW	
41	Independence Creek	Tepee Creek	52N	01E	7	NWNW	L 1
42	Unnamed Stream	Independence Creek	52N	01E	7	NWNW	L 1
43	Unnamed Stream	Independence Creek	52N	01E	7	SENW	
44	Unnamed Stream	Independence Creek	52N	01E	7	SENW	
45	Snowshoe Creek	Independence Creek	52N	01E	8		
46	Snowshoe Creek	Independence Creek	52N	01E	9		
47	Unnamed Stream	Ellis Creek	52N	01E	9		
48	Ellis Creek	Independence Creek	52N	01E	10		
49	Unnamed Stream	Ellis Creek	52N	01E	10		
50	Goose Creek	Independence Creek	52N	01W	1		
51	Gosling Creek	Goose Creek	52N	01W	1		
52	Unnamed Stream	Goose Creek	52N	01W	1		
53	Unnamed Stream	Goose Creek	52N	01W	1		
54	Goose Creek	Independence Creek	52N	01W	2		
55	Gosling Creek	Goose Creek	52N	01W	2		

Attachment 1

	A	B	C	D	E	F	G
1	SOURCE NAME	TO TRIBUTARY	TOWNSHIP	RANGE	SECTION	QQ	SURVEY CODE AND NUMBER
56	Unnamed Stream	Goose Creek	52N	01W	2		
57	Unnamed Stream	Goose Creek	52N	01W	2		
58	Unnamed Stream	Goose Creek	52N	01W	2		
59	Unnamed Stream	Gosling Creek	52N	01W	2		
60	Unnamed Stream	Goose Creek	52N	01W	3		
61	Independence Creek	Tepee Creek	52N	01W	11		
62	Unnamed Stream	Gosling Creek	52N	01W	11		
63	Unnamed Stream	Independence Creek	52N	01W	11		
64	Goose Creek	Independence Creek	52N	01W	12		
65	Independence Creek	Tepee Creek	52N	01W	12		
66	Unnamed Stream	Independence Creek	52N	01W	12		
67	Unnamed Stream	Independence Creek	52N	01W	12		
68	Unnamed Stream	Independence Creek	52N	01W	12		
69	Unnamed Stream	Independence Creek	52N	01W	12		
70	Unnamed Stream	Independence Creek	52N	01W	13		
71	Unnamed Stream	Independence Creek	52N	01W	13		
72	Unnamed Stream	Independence Creek	52N	01W	14		
73	Unnamed Stream	Independence Creek	52N	02E	4	NENE	L 1
74	Independence Creek	Tepee Creek	52N	02E	4	NESW	
75	Unnamed Stream	Independence Creek	52N	02E	4	NESW	
76	Unnamed Stream	Independence Creek	52N	02E	4	NESW	
77	Independence Creek	Tepee Creek	52N	02E	4	NWSE	
78	Unnamed Stream	Independence Creek	52N	02E	4	NWSE	
79	Independence Creek	Tepee Creek	52N	02E	4	NWSW	
80	Unnamed Stream	Independence Creek	52N	02E	4	NWSW	
81	Unnamed Stream	Independence Creek	52N	02E	4	SENE	
82	Unnamed Stream	Independence Creek	52N	02E	4	SENE	
83	Independence Creek	Tepee Creek	52N	02E	4	SESW	
84	Unnamed Stream	Independence Creek	52N	02E	4	SWNE	
85	Independence Creek	Tepee Creek	52N	02E	4	SWSE	
86	Independence Creek	Tepee Creek	52N	02E	5		
87	Unnamed Stream	Independence Creek	52N	02E	5		
88	Unnamed Stream	Independence Creek	52N	02E	5		
89	Unnamed Stream	Independence Creek	52N	02E	5		
90	Unnamed Stream	Independence Creek	52N	02E	5		
91	Unnamed Stream	Independence Creek	52N	02E	6		
92	Unnamed Stream	Owl Creek	52N	02E	6		
93	Unnamed Stream	Owl Creek	52N	02E	6		
94	Independence Creek	Tepee Creek	52N	02E	9		
95	Tepee Creek	Tepee Creek	52N	02E	9		
96	North Creek	Snow Creek	53N	01E	1		
97	Unnamed Stream	North Creek	53N	01E	1		
98	Unnamed Stream	Snow Creek	53N	01E	2		
99	Unnamed Stream	Snow Creek	53N	01E	2		
100	Unnamed Stream	Snow Creek	53N	01E	2		
101	Unnamed Stream	Snow Creek	53N	01E	2		
102	Snow Creek	Independence Creek	53N	01E	3		
103	Unnamed Stream	Snow Creek	53N	01E	3		
104	Snow Creek	Independence Creek	53N	01E	4		
105	Unnamed Stream	Snow Creek	53N	01E	4		
106	Unnamed Stream	Surprise Creek	53N	01E	8		
107	Unnamed Stream	Surprise Creek	53N	01E	8		
108	Unnamed Stream	Snow Creek	53N	01E	9		
109	Unnamed Stream	Snow Creek	53N	01E	9		

Attachment 1

	A	B	C	D	E	F	G
1	SOURCE NAME	TO TRIBUTARY	TOWNSHIP	RANGE	SECTION	QQ	SURVEY CODE AND NUMBER
110	Unnamed Stream	Snow Creek	53N	01E	9		
111	Unnamed Stream	Snow Creek	53N	01E	9		
112	Snow Creek	Independence Creek	53N	01E	10		
113	Unnamed Stream	Snow Creek	53N	01E	10		
114	Unnamed Stream	Snow Creek	53N	01E	10		
115	Unnamed Stream	Snow Creek	53N	01E	10		
116	Unnamed Stream	Snow Creek	53N	01E	10		
117	Unnamed Stream	Snow Creek	53N	01E	10		
118	Unnamed Stream	Snow Creek	53N	01E	10		
119	Snow Creek	Independence Creek	53N	01E	11		
120	Unnamed Stream	North Creek	53N	01E	11		
121	Unnamed Stream	North Creek	53N	01E	11		
122	Unnamed Stream	Snow Creek	53N	01E	11		
123	Unnamed Stream	Snow Creek	53N	01E	11		
124	Unnamed Stream	Snow Creek	53N	01E	11		
125	North Creek	Snow Creek	53N	01E	12		
126	Unnamed Stream	North Creek	53N	01E	12		
127	Unnamed Stream	North Creek	53N	01E	12		
128	Unnamed Stream	North Creek	53N	01E	12		
129	Griffin Creek	Independence Creek	53N	01E	13		
130	North Creek	Snow Creek	53N	01E	13		
131	Unnamed Stream	North Creek	53N	01E	13		
132	Unnamed Stream	North Creek	53N	01E	13		
133	Unnamed Stream	North Creek	53N	01E	13		
134	Snow Creek	Independence Creek	53N	01E	14		
135	Unnamed Stream	North Creek	53N	01E	14		
136	Unnamed Stream	Snow Creek	53N	01E	14		
137	Ermine Creek	Independence Creek	53N	01E	15		
138	Unnamed Stream	Snow Creek	53N	01E	15		
139	Ermine Creek	Independence Creek	53N	01E	16		
140	Surprise Creek	Declaration Creek	53N	01E	16		
141	Unnamed Stream	Snow Creek	53N	01E	16		
142	Unnamed Stream	Snow Creek	53N	01E	16		
143	Unnamed Stream	Surprise Creek	53N	01E	16		
144	Unnamed Stream	Surprise Creek	53N	01E	17		
145	Unnamed Stream	Surprise Creek	53N	01E	17		
146	Unnamed Stream	Surprise Creek	53N	01E	17		
147	Unnamed Stream	Surprise Creek	53N	01E	17		
148	Unnamed Stream	Surprise Creek	53N	01E	18		
149	Unnamed Stream	Declaration Creek	53N	01E	19		
150	Unnamed Stream	Declaration Creek	53N	01E	19		
151	Surprise Creek	Declaration Creek	53N	01E	20		
152	Unnamed Stream	Declaration Creek	53N	01E	20		
153	Unnamed Stream	Surprise Creek	53N	01E	20		
154	Surprise Creek	Declaration Creek	53N	01E	21		
155	Unnamed Stream	Declaration Creek	53N	01E	21		
156	Unnamed Stream	Declaration Creek	53N	01E	21		
157	Unnamed Stream	Independence Creek	53N	01E	21		
158	Ermine Creek	Independence Creek	53N	01E	22		
159	Gorsuch Creek	Independence Creek	53N	01E	22		
160	Unnamed Stream	Ermine Creek	53N	01E	22		
161	Unnamed Stream	Independence Creek	53N	01E	22		
162	Ermine Creek	Independence Creek	53N	01E	23		
163	Snow Creek	Independence Creek	53N	01E	23		

Attachment 1

	A	B	C	D	E	F	G
1	SOURCE NAME	TO TRIBUTARY	TOWNSHIP	RANGE	SECTION	QQ	SURVEY CODE AND NUMBER
164	Unnamed Stream	Ermine Creek	53N	01E	23		
165	Unnamed Stream	Snow Creek	53N	01E	23		
166	Griffin Creek	Independence Creek	53N	01E	24		
167	Independence Creek	Tepee Creek	53N	01E	24		
168	North Creek	Snow Creek	53N	01E	24		
169	Snow Creek	Independence Creek	53N	01E	24		
170	Independence Creek	Tepee Creek	53N	01E	25		
171	Unnamed Stream	Independence Creek	53N	01E	25		
172	Unnamed Stream	Independence Creek	53N	01E	25		
173	Unnamed Stream	Owl Creek	53N	01E	25		
174	Unnamed Stream	Owl Creek	53N	01E	25		
175	Unnamed Stream	Ermine Creek	53N	01E	26	NENW	
176	Gorsuch Creek	Independence Creek	53N	01E	26	NESW	
177	Independence Creek	Tepee Creek	53N	01E	26	NESW	
178	Unnamed Stream	Independence Creek	53N	01E	26	NESW	
179	Unnamed Stream	Independence Creek	53N	01E	26	NESW	
180	Ermine Creek	Independence Creek	53N	01E	26	NWNE	
181	Unnamed Stream	Ermine Creek	53N	01E	26	NWNE	
182	Gorsuch Creek	Independence Creek	53N	01E	26	NWNW	
183	Independence Creek	Tepee Creek	53N	01E	26	SENE	
184	Gorsuch Creek	Independence Creek	53N	01E	26	SENW	
185	Gorsuch Creek	Independence Creek	53N	01E	26	SWNW	
186	Unnamed Stream	Independence Creek	53N	01E	26	SWSE	
187	Gorsuch Creek	Independence Creek	53N	01E	27		
188	Independence Creek	Tepee Creek	53N	01E	27		
189	Unnamed Stream	Ermine Creek	53N	01E	27		
190	Unnamed Stream	Independence Creek	53N	01E	27		
191	Unnamed Stream	Independence Creek	53N	01E	27		
192	Declaration Creek	Independence Creek	53N	01E	28		
193	Unnamed Stream	Declaration Creek	53N	01E	28		
194	Unnamed Stream	Declaration Creek	53N	01E	28		
195	Unnamed Stream	Declaration Creek	53N	01E	28		
196	Unnamed Stream	Independence Creek	53N	01E	28		
197	Unnamed Stream	Independence Creek	53N	01E	28		
198	Declaration Creek	Independence Creek	53N	01E	29		
199	Surprise Creek	Declaration Creek	53N	01E	29		
200	Unnamed Stream	Declaration Creek	53N	01E	29		
201	Unnamed Stream	Declaration Creek	53N	01E	29		
202	Unnamed Stream	Declaration Creek	53N	01E	29		
203	Declaration Creek	Independence Creek	53N	01E	30		
204	Unnamed Stream	Declaration Creek	53N	01E	30		
205	Unnamed Stream	Declaration Creek	53N	01E	30		
206	Unnamed Stream	Declaration Creek	53N	01E	30		
207	Unnamed Stream	Declaration Creek	53N	01E	30		
208	Unnamed Stream	Declaration Creek	53N	01E	30		
209	Unnamed Stream	Declaration Creek	53N	01E	31		
210	Unnamed Stream	Declaration Creek	53N	01E	31		
211	Unnamed Stream	Independence Creek	53N	01E	31		
212	Unnamed Stream	Independence Creek	53N	01E	31		
213	Unnamed Stream	Independence Creek	53N	01E	31		
214	Camp Creek	Independence Creek	53N	01E	32		
215	Independence Creek	Tepee Creek	53N	01E	32		
216	Unnamed Stream	Independence Creek	53N	01E	32		
217	Camp Creek	Independence Creek	53N	01E	33		

Attachment 1

	A	B	C	D	E	F	G
1	SOURCE NAME	TO TRIBUTARY	TOWNSHIP	RANGE	SECTION	QQ	SURVEY CODE AND NUMBER
218	Declaration Creek	Independence Creek	53N	01E	33		
219	Ellis Creek	Independence Creek	53N	01E	33		
220	Independence Creek	Tepee Creek	53N	01E	33		
221	Unnamed Stream	Declaration Creek	53N	01E	33		
222	Unnamed Stream	Independence Creek	53N	01E	33		
223	Unnamed Stream	Independence Creek	53N	01E	33		
224	Independence Creek	Tepee Creek	53N	01E	34		
225	Snowbird Creek	Independence Creek	53N	01E	34		
226	Unnamed Stream	Independence Creek	53N	01E	34		
227	Unnamed Stream	Snowbird Creek	53N	01E	34		
228	Unnamed Stream	Snowbird Creek	53N	01E	34		
229	Independence Creek	Tepee Creek	53N	01E	35		
230	Unnamed Stream	Independence Creek	53N	01E	35		
231	Unnamed Stream	Independence Creek	53N	01E	35		
232	Unnamed Stream	Independence Creek	53N	01E	35		
233	Unnamed Stream	Independence Creek	53N	01E	35		
234	Unnamed Stream	Owl Creek	53N	01E	35		
235	Owl Creek	Independence Creek	53N	01E	36		
236	Unnamed Stream	Owl Creek	53N	01E	36		
237	Unnamed Stream	Owl Creek	53N	01E	36		
238	Unnamed Stream	Owl Creek	53N	01E	36		
239	Unnamed Stream	Owl Creek	53N	01E	36		
240	Unnamed Stream	Declaration Creek	53N	01W	24		
241	Declaration Creek	Independence Creek	53N	01W	25		
242	Unnamed Stream	Declaration Creek	53N	01W	25		
243	Unnamed Stream	Declaration Creek	53N	01W	25		
244	Goose Creek	Independence Creek	53N	01W	34		
245	Unnamed Stream	Goose Creek	53N	01W	34		
246	Goose Creek	Independence Creek	53N	01W	35		
247	Unnamed Stream	Goose Creek	53N	01W	35		
248	Unnamed Stream	Goose Creek	53N	01W	35		
249	Unnamed Stream	Goose Creek	53N	01W	35		
250	Declaration Creek	Independence Creek	53N	01W	36		
251	Unnamed Stream	Declaration Creek	53N	01W	36		
252	Unnamed Stream	Declaration Creek	53N	01W	36		
253	Unnamed Stream	Declaration Creek	53N	01W	36		
254	Unnamed Stream	Goose Creek	53N	01W	36		
255	Unnamed Stream	Goose Creek	53N	01W	36		
256	Unnamed Stream	Goose Creek	53N	01W	36		
257	North Creek	Snow Creek	53N	02E	6		
258	Unnamed Stream	North Creek	53N	02E	7		
259	Unnamed Stream	North Creek	53N	02E	7		
260	Unnamed Stream	Green Creek	53N	02E	8		
261	Unnamed Stream	Emerson Creek	53N	02E	9		
262	Emerson Creek	Independence Creek	53N	02E	15		
263	Unnamed Stream	Emerson Creek	53N	02E	15		
264	Emerson Creek	Independence Creek	53N	02E	16		
265	Unnamed Stream	Emerson Creek	53N	02E	16		
266	Unnamed Stream	Emerson Creek	53N	02E	16		
267	Unnamed Stream	Emerson Creek	53N	02E	16		
268	Unnamed Stream	Emerson Creek	53N	02E	16		
269	Unnamed Stream	Emerson Creek	53N	02E	16		
270	Unnamed Stream	Emerson Creek	53N	02E	16		
271	Green Creek	Independence Creek	53N	02E	17		

Attachment 1




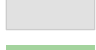

	A	B	C	D	E	F	G
1	SOURCE NAME	TO TRIBUTARY	TOWNSHIP	RANGE	SECTION	QQ	SURVEY CODE AND NUMBER
272	Unnamed Stream	Emerson Creek	53N	02E	17		
273	Unnamed Stream	Green Creek	53N	02E	17		
274	Unnamed Stream	Green Creek	53N	02E	17		
275	Unnamed Stream	Green Creek	53N	02E	17		
276	Unnamed Stream	Green Creek	53N	02E	17		
277	Unnamed Stream	Green Creek	53N	02E	17		
278	Griffin Creek	Independence Creek	53N	02E	18		
279	Unnamed Stream	Green Creek	53N	02E	18		
280	Unnamed Stream	North Creek	53N	02E	18		
281	Green Creek	Independence Creek	53N	02E	19	NENE	
282	Green Creek	Independence Creek	53N	02E	19	NESE	
283	Unnamed Stream	Independence Creek	53N	02E	19	NESW	
284	Griffin Creek	Independence Creek	53N	02E	19	NWNW	L 1
285	Unnamed Stream	Independence Creek	53N	02E	19	NWSW	L 3
286	Green Creek	Independence Creek	53N	02E	19	SENE	
287	Unnamed Stream	Independence Creek	53N	02E	19	SENE	
288	Green Creek	Independence Creek	53N	02E	19	SESE	
289	Griffin Creek	Independence Creek	53N	02E	19	SWNW	L 2
290	Green Creek	Independence Creek	53N	02E	19	SWSE	
291	Emerson Creek	Independence Creek	53N	02E	20		
292	Green Creek	Independence Creek	53N	02E	20		
293	Unnamed Stream	Emerson Creek	53N	02E	20		
294	Unnamed Stream	Emerson Creek	53N	02E	20		
295	Unnamed Stream	Emerson Creek	53N	02E	20		
296	Unnamed Stream	Independence Creek	53N	02E	20		
297	Emerson Creek	Independence Creek	53N	02E	21		
298	Unnamed Stream	Emerson Creek	53N	02E	21		
299	Unnamed Stream	Emerson Creek	53N	02E	21		
300	Unnamed Stream	Emerson Creek	53N	02E	21		
301	Unnamed Stream	Emerson Creek	53N	02E	21		
302	Unnamed Stream	Emerson Creek	53N	02E	21		
303	Unnamed Stream	Emerson Creek	53N	02E	21		
304	Unnamed Stream	Emerson Creek	53N	02E	21		
305	Unnamed Stream	Emerson Creek	53N	02E	22		
306	Unnamed Stream	Emerson Creek	53N	02E	22		
307	Minor Creek	Independence Creek	53N	02E	28		
308	Trident Creek	Independence Creek	53N	02E	28		
309	Unnamed Stream	Emerson Creek	53N	02E	28		
310	Unnamed Stream	Emerson Creek	53N	02E	28		
311	Emerson Creek	Independence Creek	53N	02E	29		
312	Independence Creek	Tepee Creek	53N	02E	29		
313	Minor Creek	Independence Creek	53N	02E	29		
314	Owl Creek	Independence Creek	53N	02E	29		
315	Unnamed Stream	Emerson Creek	53N	02E	29		
316	Unnamed Stream	Emerson Creek	53N	02E	29		
317	Unnamed Stream	Independence Creek	53N	02E	29		
318	Green Creek	Independence Creek	53N	02E	30		
319	Independence Creek	Tepee Creek	53N	02E	30		
320	Owl Creek	Independence Creek	53N	02E	30		
321	Unnamed Stream	Independence Creek	53N	02E	30		
322	Unnamed Stream	Independence Creek	53N	02E	30		
323	Unnamed Stream	Owl Creek	53N	02E	30		
324	Unnamed Stream	Owl Creek	53N	02E	30		
325	Owl Creek	Independence Creek	53N	02E	31		

Attachment 1

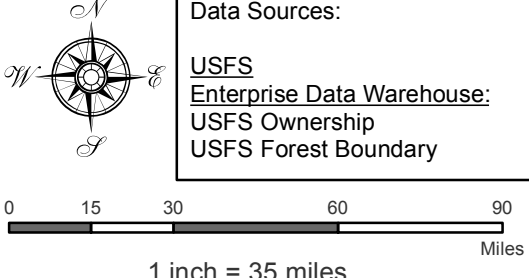
	A	B	C	D	E	F	G
1	SOURCE NAME	TO TRIBUTARY	TOWNSHIP	RANGE	SECTION	QQ	SURVEY CODE AND NUMBER
326	Unnamed Stream	Independence Creek	53N	02E	31		
327	Unnamed Stream	Owl Creek	53N	02E	31		
328	Unnamed Stream	Owl Creek	53N	02E	31		
329	Unnamed Stream	Owl Creek	53N	02E	31		
330	Unnamed Stream	Owl Creek	53N	02E	31		
331	Unnamed Stream	Owl Creek	53N	02E	31		
332	Unnamed Stream	Owl Creek	53N	02E	31		
333	Unnamed Stream	Owl Creek	53N	02E	31		
334	Minor Creek	Independence Creek	53N	02E	32	NENE	
335	Independence Creek	Tepee Creek	53N	02E	32	NENW	
336	Unnamed Stream	Independence Creek	53N	02E	32	NENW	
337	Unnamed Stream	Independence Creek	53N	02E	32	NESW	
338	Independence Creek	Tepee Creek	53N	02E	32	NWNW	
339	Unnamed Stream	Independence Creek	53N	02E	32	NWNW	
340	Independence Creek	Tepee Creek	53N	02E	32	NWSE	
341	Unnamed Stream	Independence Creek	53N	02E	32	NWSE	
342	Unnamed Stream	Independence Creek	53N	02E	32	NWSW	
343	Unnamed Stream	Independence Creek	53N	02E	32	SENW	
344	Independence Creek	Tepee Creek	53N	02E	32	SESE	
345	Trident Creek	Independence Creek	53N	02E	32	SESE	
346	Unnamed Stream	Independence Creek	53N	02E	32	SESE	
347	Unnamed Stream	Independence Creek	53N	02E	32	SESW	
348	Unnamed Stream	Independence Creek	53N	02E	32	SESW	
349	Independence Creek	Tepee Creek	53N	02E	32	SWNE	
350	Unnamed Stream	Independence Creek	53N	02E	32	SWNE	
351	Unnamed Stream	Independence Creek	53N	02E	32	SWNW	
352	Independence Creek	Tepee Creek	53N	02E	32	SWSE	
353	Unnamed Stream	Independence Creek	53N	02E	32	SWSE	
354	Unnamed Stream	Independence Creek	53N	02E	32	SWSE	
355	Unnamed Stream	Independence Creek	53N	02E	32	SWSE	
356	Unnamed Stream	Independence Creek	53N	02E	32	SWSE	
357	Unnamed Stream	Independence Creek	53N	02E	32	SWSE	
358	Unnamed Stream	Independence Creek	53N	02E	32	SWSW	
359	Trident Creek	Independence Creek	53N	02E	33		
360	Unnamed Stream	Independence Creek	53N	02E	33		
361	Unnamed Stream	Independence Creek	53N	02E	33		
362	Unnamed Stream	Trident Creek	53N	02E	33		
363	Snow Creek	Independence Creek	54N	01E	33		
364	Unnamed Stream	Snow Creek	54N	01E	34		
365	Unnamed Spring	Sinks	52N	01E	10	NWNE	
366	Bishop Spring	Snow Creek	53N	01E	2	NWSE	
367	Unnamed Spring	Snow Creek	53N	01E	2	NWSE	

Attachment 2
 Place of Use Map Fire Suppression - Water Right No. 94-09517A
 National Forests in Idaho and the Kaniksu, Lolo and Kootenai NF in Montana

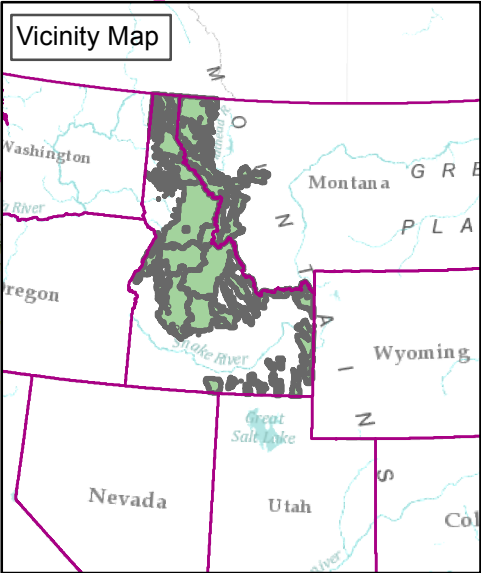
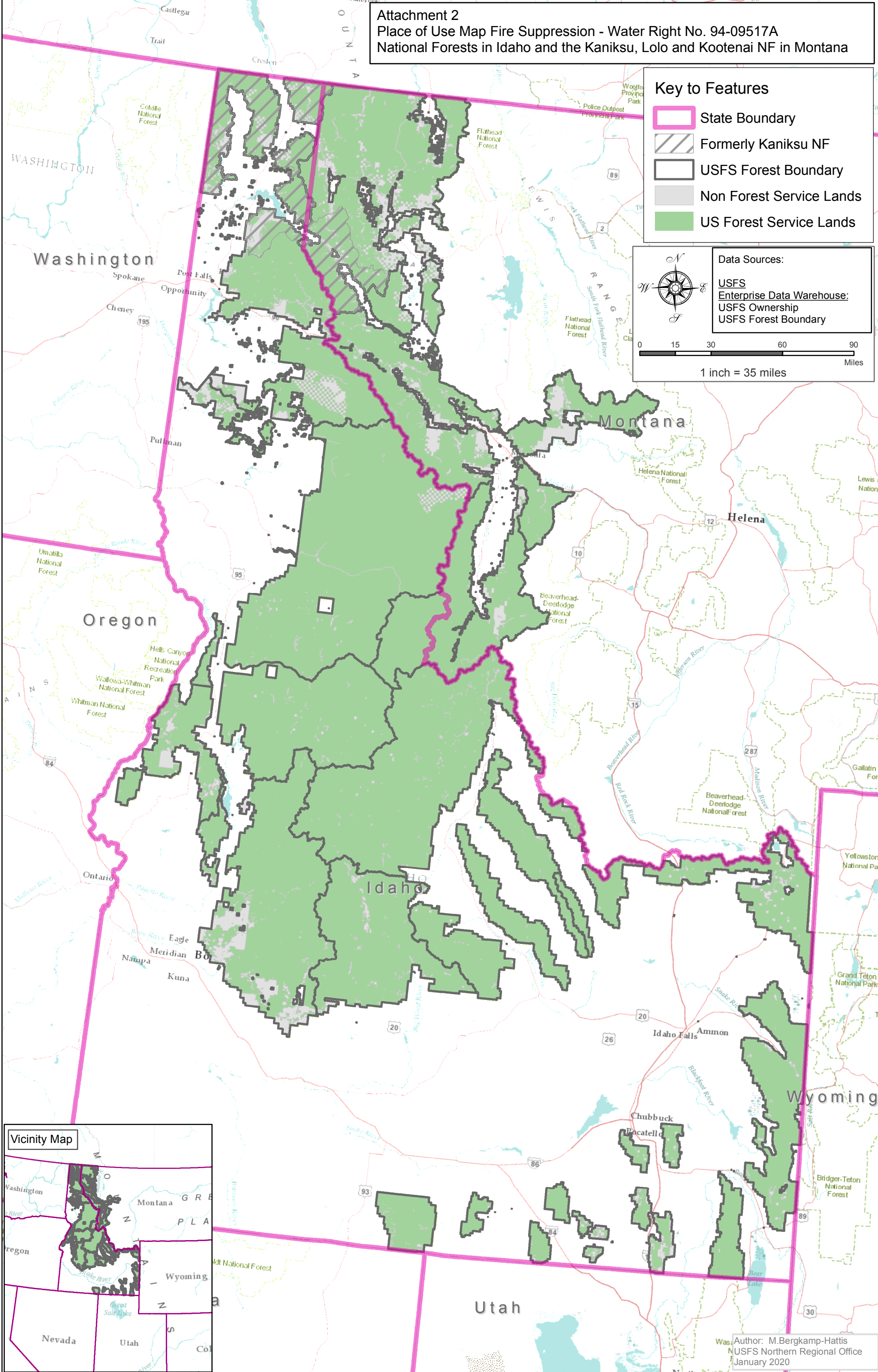
Key to Features

-  State Boundary
-  Formerly Kaniksu NF
-  USFS Forest Boundary
-  Non Forest Service Lands
-  US Forest Service Lands

Data Sources:
 USFS
 Enterprise Data Warehouse:
 USFS Ownership
 USFS Forest Boundary



0 15 30 60 90
 Miles
 1 inch = 35 miles



Author: M.Bergkamp-Hattis
 USFS Northern Regional Office
 January 2020